



# Fundamentals of GIS

Aleksey Sheshukov

Darci Paull

Will Boyer

Sue Brown



**KCARE**  
Kansas Center for Agricultural  
Resources and the Environment

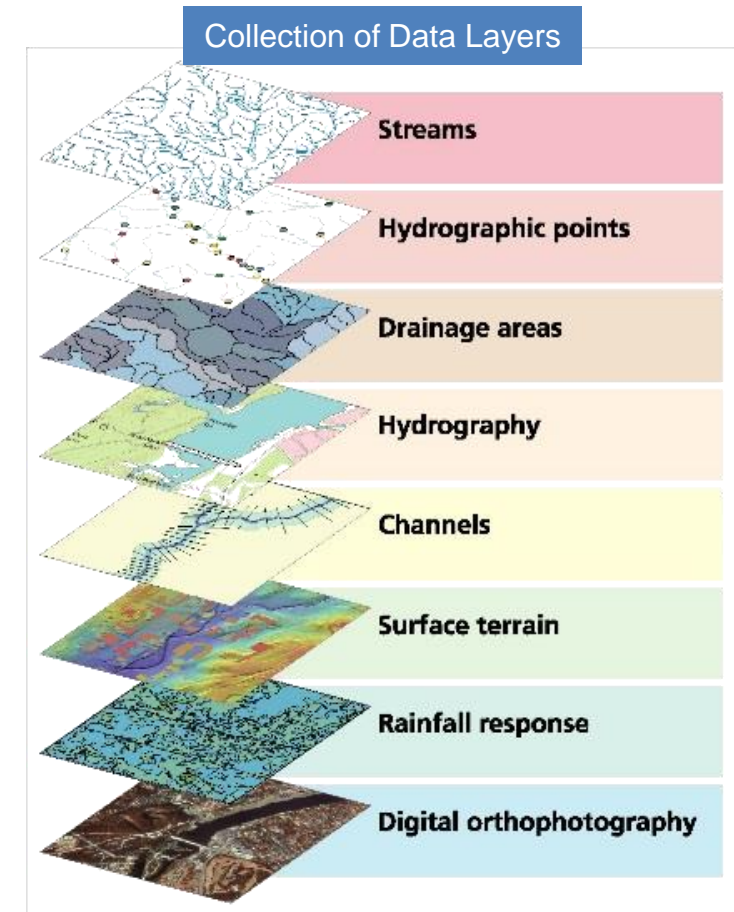
**K-STATE**  
Research and Extension

# What is GIS?

- Geographic Information System
  - GIS is a system that captures, stores, analyzes, manages, and presents data that are linked to a location
  - GIS is a system that includes a form of a mapping software
- Geographic implies of the surface of the earth
  - Information implies knowledge of or collection of some form of data
    - A system implies some form of organization, arrangement, etc.. Perhaps a framework?

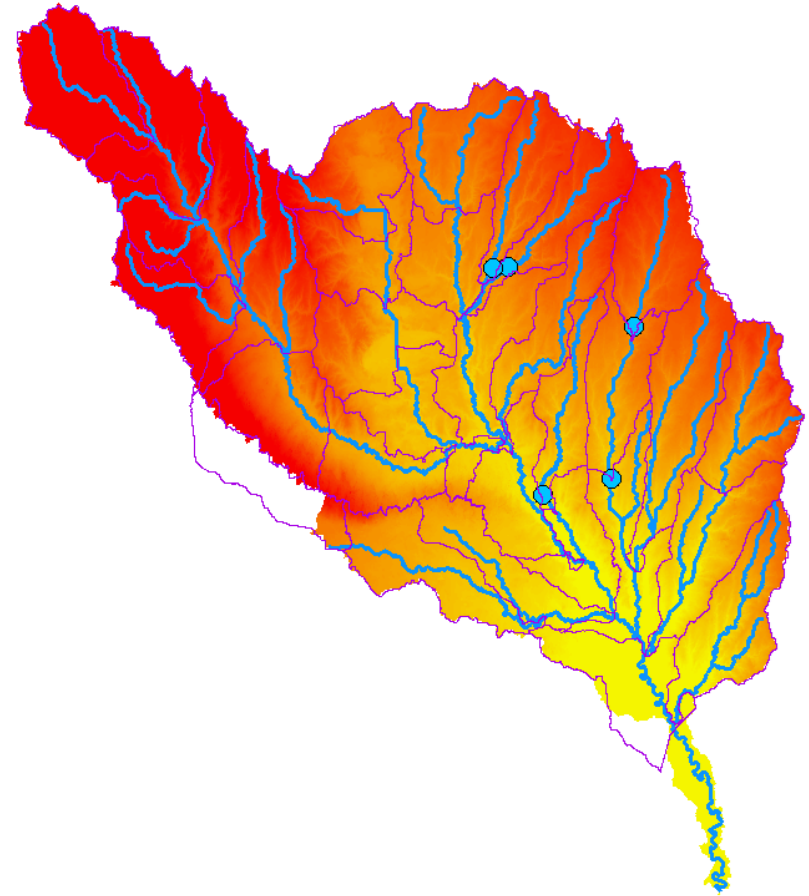
# GIS for Water Resources

- GIS is a powerful tool for developing solutions for water resources
- Hydrologists use GIS technology to integrate various data and applications into one, manageable system
- ArcGIS Pro tools:
  - Spatial analyst toolbox
  - ArcHydro package
  - TauDEM package
  - Etc.



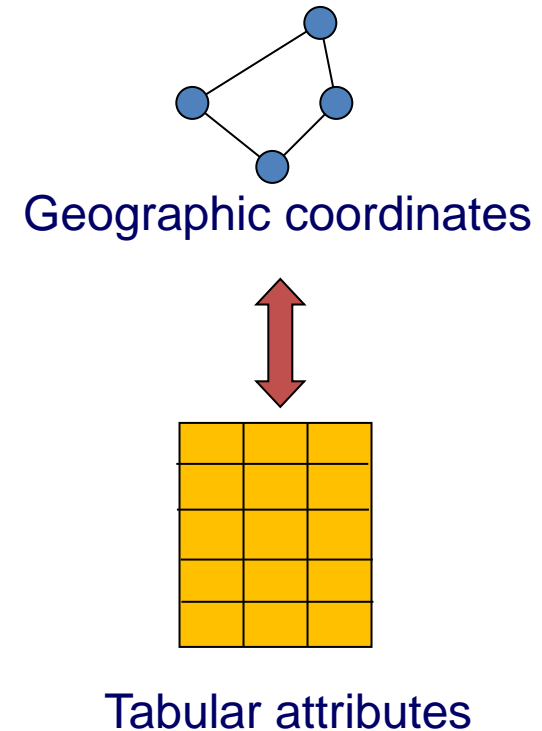
# Integrated Water Geodatabase

- Digital Elevation Model
- Watersheds
- Streams
- Water bodies
- Land use / Land cover
- Soils
- Water monitoring stations
- Meteorological stations
- Etc...



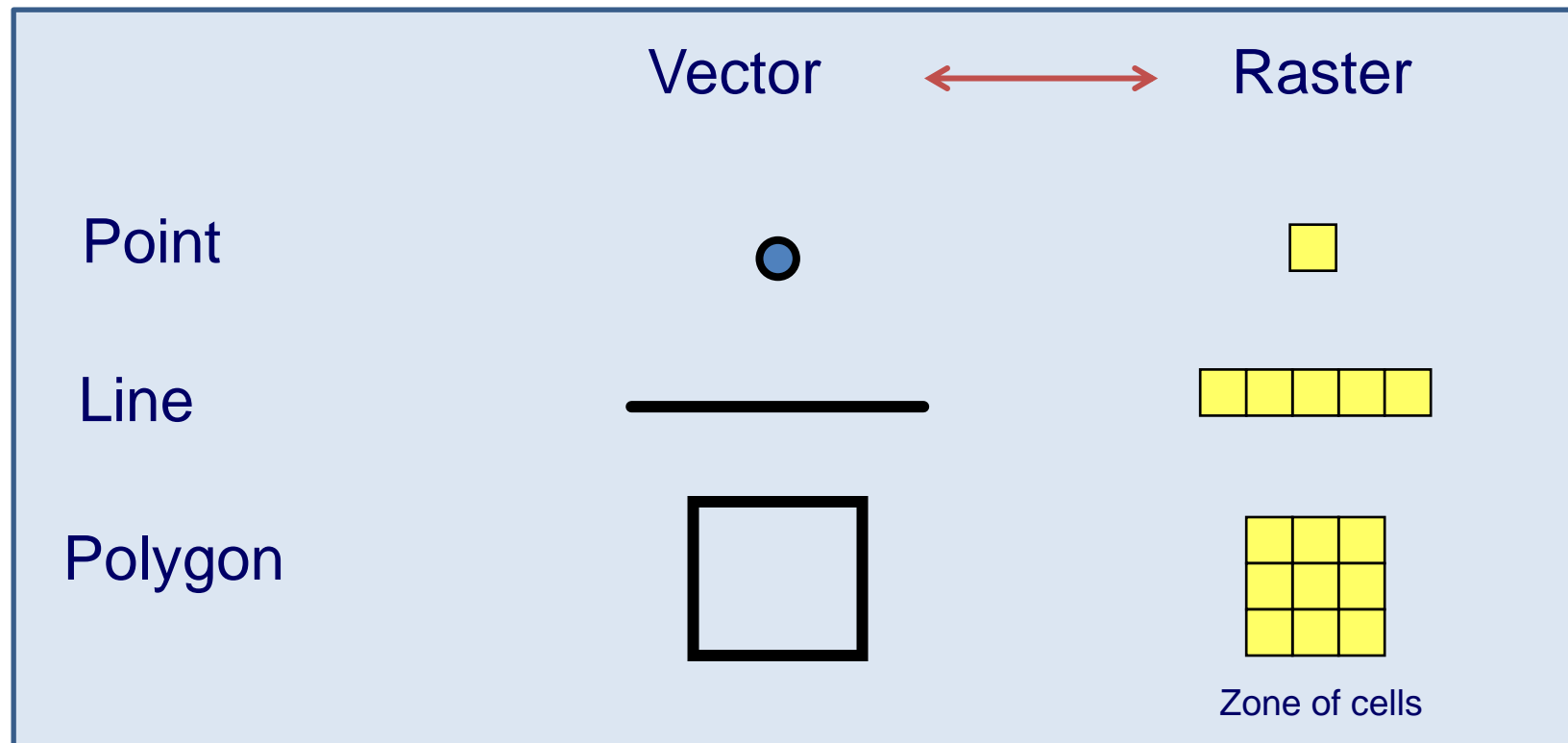
# Geographic Data Models

- A **geographic data model** is a structure for organizing geospatial data so that it can be easily stored and retrieved
- Geographic coordinates and attributes are stored in separate but linked files
- **Shapefiles**
  - Developed for ArcView ~ 1993
  - Attributes in **dBase (.dbf)** tables



# Raster and Vector Datasets

- **Vector** datasets are defined spatially
- **Raster** datasets are described by a grid, one value per grid-cell

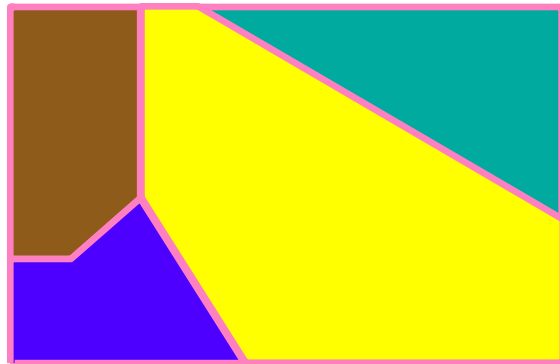


# Raster and Vector

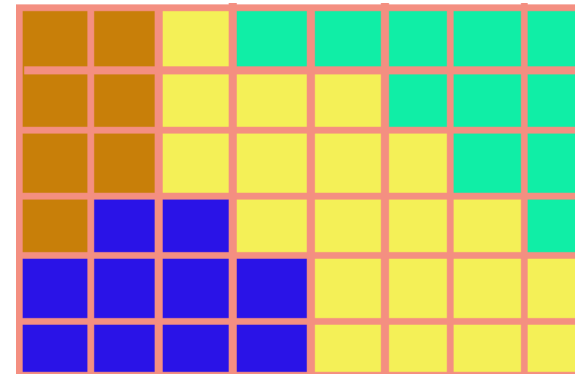
## Two methods of representing geographic data in GIS

- Both represent different ways to **encode** and **generalize** geographic phenomena
- Both can be used to identify **both** fields and discrete objects
- In practice, a strong association between **raster and fields** and **vector and discrete objects**

Vector

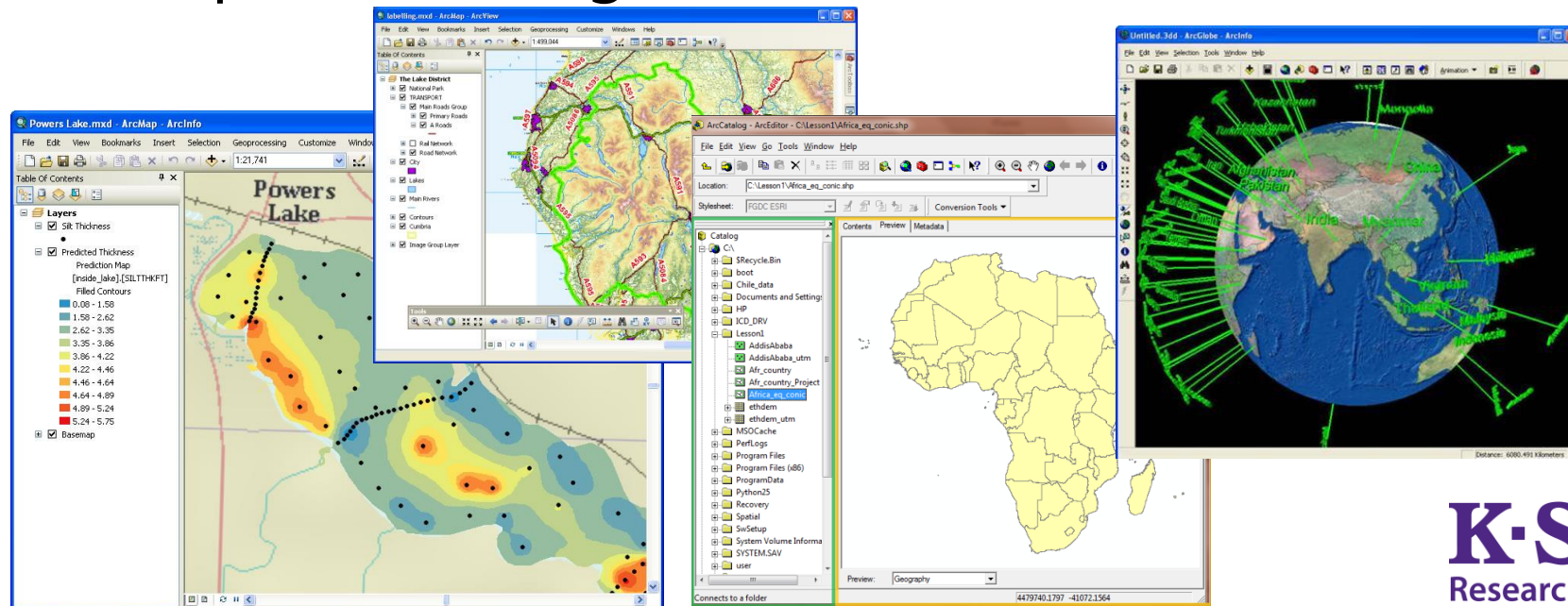


Raster



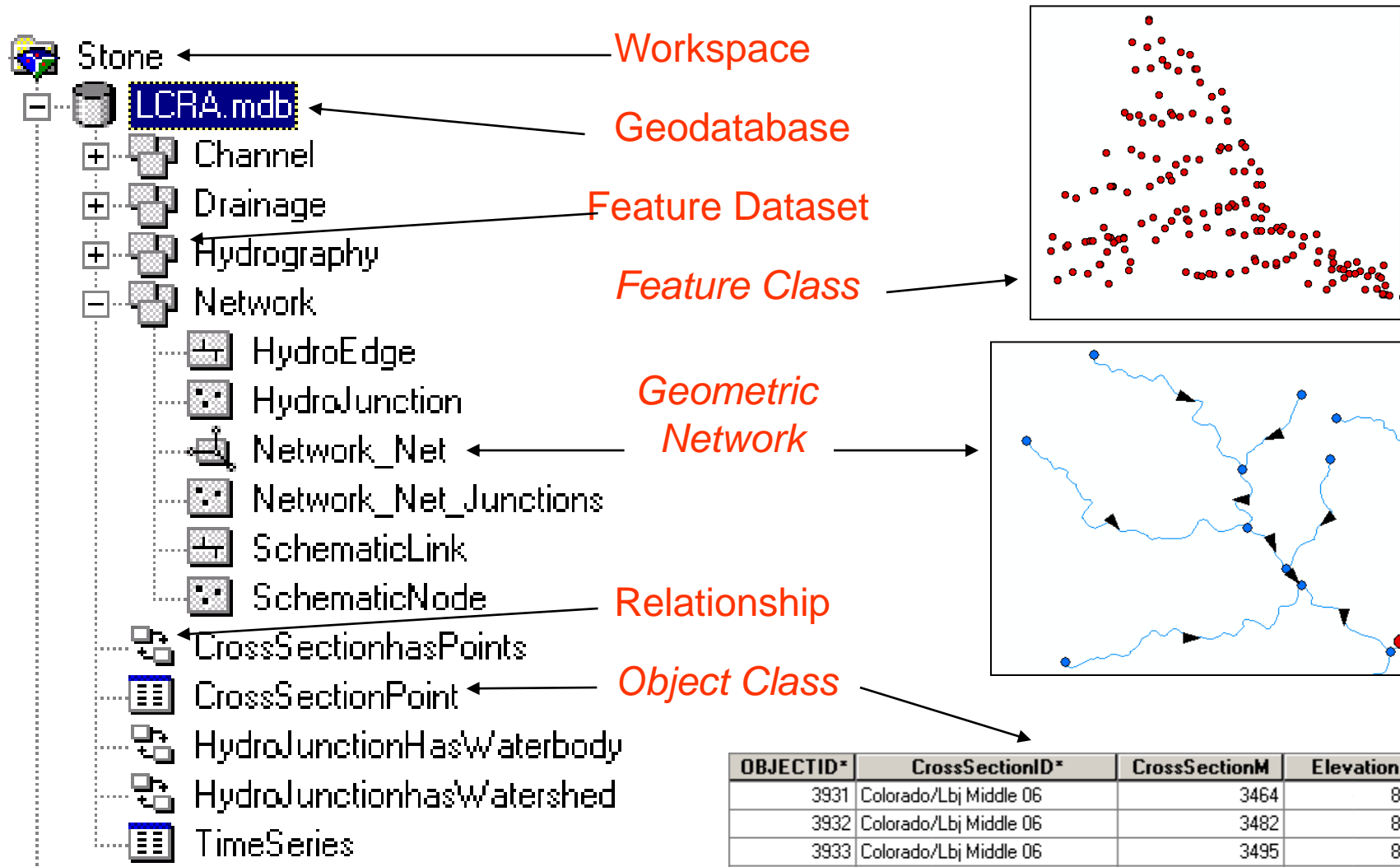
# ESRI ArcGIS

- A platform for designing and managing solutions through the application of geographic knowledge.
  - ArcGIS Pro, ArcGIS Online, ...
  - ArcMap, ArcCatalog, ArcGlobe, ArcScene





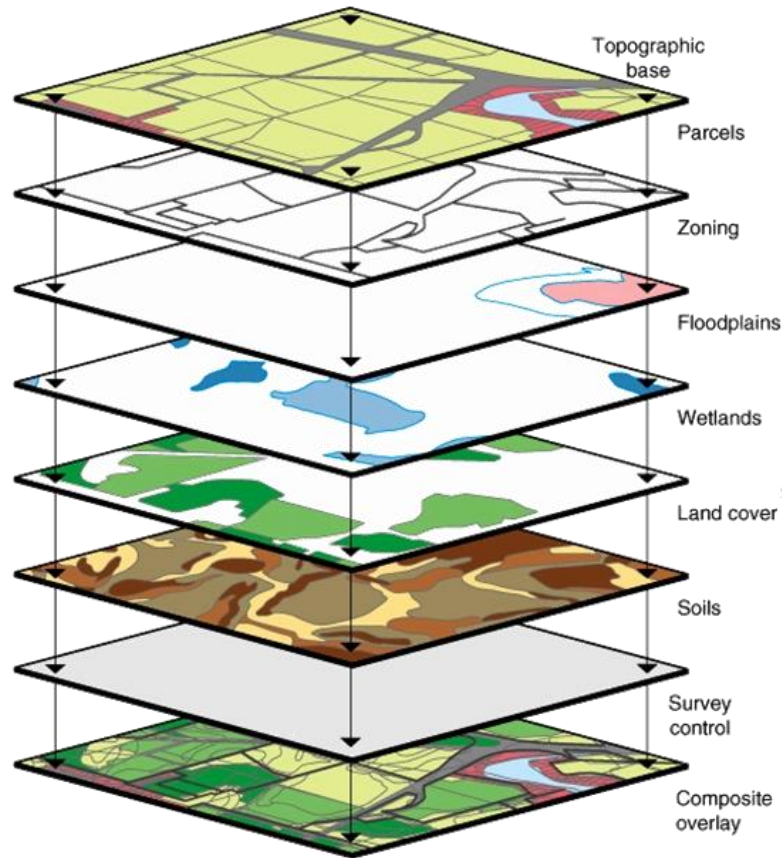
# ArcGIS Geodatabase



OBJECTID*	CrossSectionID*	CrossSectionM	Elevation
3931	Colorado/Lbj Middle 06	3464	801
3932	Colorado/Lbj Middle 06	3482	800
3933	Colorado/Lbj Middle 06	3495	800
3934	Colorado/Lbj Middle 06	3511	799
3935	Colorado/Lbj Middle 06	3527	799

# GIS Input Data

## Collection of Data Layers



## Composite Characteristics

