

# Little Arkansas River WRAPS

Spring 2023

Volume 5, Issue 1

## Harvesting Knowledge: Little Ark's Productive Producers



In this issue, we are high lighting the work of a father and son, Gary and Jarrod Kurr. Gary began farming with his father in the 70s, raising wheat, milo, and sorghum silage. In addition to the grain production, they fed out cattle until the late 90s. Both maternal and paternal grandparents were farmers and were witness to the progression from horses to modern equipment. Jarrod joined the farm full-time in 2016 after spending 6 years as an Ag Loan Officer.

The Kurr's farm in Harvey, Butler, and Marion counties. They began utilizing more minimum tillage methods in 2007 with strip tilling for corn. Rotation transitioned from continuous wheat and sorghum to a corn, wheat, soybean rotation. Double crop soybeans typically follow the wheat. At this time, the Kurr's started utilizing no-till on some wheat and soybeans with emphasis on building organic matter and minimizing soil loss. In conjunction, they began doing regular grid samples to allow variable rate application of lime and other nutrients. As Gary shares his work with best management practices for soil health, he adds that, "We believe there is tremendous value in grid soil samples to monitor pH and fertility levels".

Gary and Jarrod go on to share their aspirations for the future of their farm. "We want to continue to grow while simultaneously improving our own efficiency, stewardship, and relationships with our landowners and agricultural partners. The Little Arkansas River WRAPS program is an integral part of helping us achieve these goals. We have participated in the Atrazine management programs and are looking forward to utilizing the nutrient management program also. We would highly encourage other producers to take advantage of the programs offered by the WRAPS project".

**Thank you, Gary and Jarrod, for your continued dedication to improving agriculture and protecting our water resources in the Little Arkansas River Watershed!**

**SAVE  
THE  
DATE!**



**FLICKNER INNOVATION FARM  
SUMMER FIELD DAY – AUGUST 10<sup>TH</sup>  
TOPIC: WEED MANAGEMENT**

The Little Arkansas River Watershed's very own Ray Flickner is at it again! **You are invited to join us at the Flickner Innovation Farm Summer 2023 Field Day on August 10th!**

If you have been following the Flickner Innovation Farm or have attended previous field days, you know there is always much to learn and see! This field day will be centered around SOIL HEALTH and WEED MANAGEMENT.

Highlights will include:

- Greenfield Robotics will be back to share how those little robots are working out for the FIF!
- An on-site demonstration of the See and Spray Technology will be shared!
- K-State's DeAnn Presley and the 'The Soil Pit' will be back!
- New soil health and weed management technologies will be shared.

**LUNCH  
WILL BE  
PROVIDED.**

***Be watching for additional details regarding this field day so we can get you registered!***

# Calling all Livestock Operations!

The Little Arkansas River WRAPS program has expanded its area for livestock practice implementation! What does this mean to you? If you are a livestock producer in the **Turkey and/or Sand Creek** sub-watersheds, the WRAPS program now funding to help you implement a best management practice (BMP) to help you improve your livestock operation and nearby water segments!

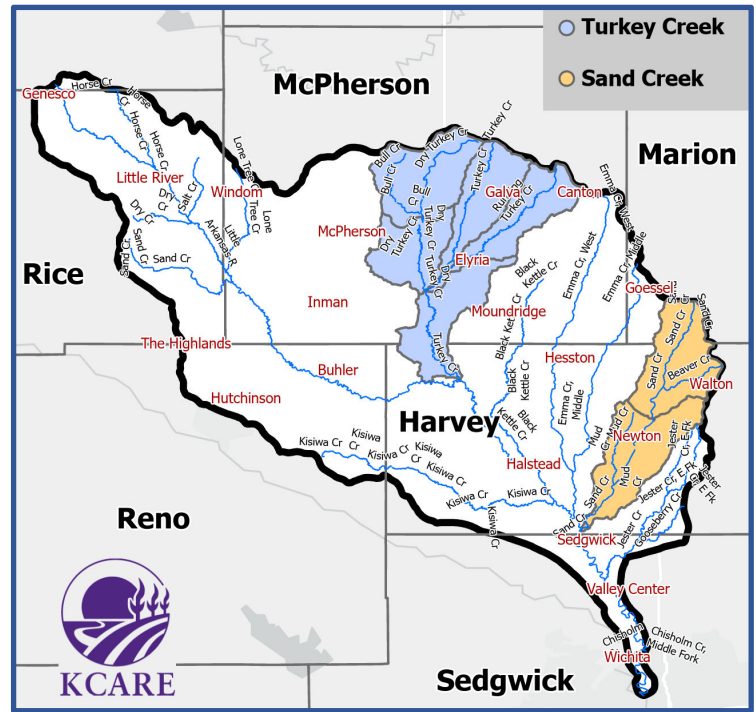
You may not know it, but Turkey and Sand Creeks have high priority TMDLs for Biology, *E. coli* bacteria, and Total Phosphorus. What does that mean? These waters are severely impaired and in need of improvement to be considered safe for aquatic life and human recreation. Many things can contribute to these impairments, but some are natural and impossible to improve. However, there are some things we can do to decrease pollutant loading and make improvements in our watershed. Livestock waste is a known source of *E. coli* bacteria and phosphorus (which contributes to both the biology, and total phosphorus TMDLs). It has been proven that good agricultural choices by way of BMP implementation can improve the health of our waters.

The WRAPS project has funding available to implement livestock BMPs to get those cattle out and away from the creek! This will save your streambank from erosion and sloughing from over-use by cattle while improving water quality!

Examples of BMPs that the WRAPS project can help you implement include:

- Alternative watering sources – let's 'moo've those cattle out of the Turkey and Sand Creeks!
- Cover Crop Grazing – this provides an alternative source for food and should help with winter feeding during the drought!
- Relocate feeding sites – move the cattle farther from the stream segments so livestock waste will not be so close to the water. This improves water quality!
- Rotational Grazing – let's give portions of your pasture a chance to rest and move those cattle to another paddock! This should improve your grass for haying and help with winter feeding during the drought!
- Vegetative Filter Strips – helps filter livestock waste out before entering the water!
- Others where appropriate.

Please contact Ron Graber or Rick Schlender for assistance if interested, their contact information can be found below.



## Contacts

### Ron Graber

Kansas State University  
Little Arkansas River Watershed WRAPS Coordinator and Central Kansas Watershed Specialist  
620-727-5665 | rgraber@ksu.edu

### Rick Schlender

Kansas State University  
Little Arkansas River Watershed WRAPS Agronomist and Crop Consultant  
620-200-4496 | rschlen2@ksu.edu

### Amanda Schielke

Kansas State University – KCARE  
Little Arkansas River WRAPS Grant Specialist  
785-313-3462 | aschielk@ksu.edu

For more information, visit our website at [www.kcare.k-state.edu](http://www.kcare.k-state.edu). We are on social media, too!  
Follow us on Twitter and like us on Facebook under the name: @KStateKCARE.

