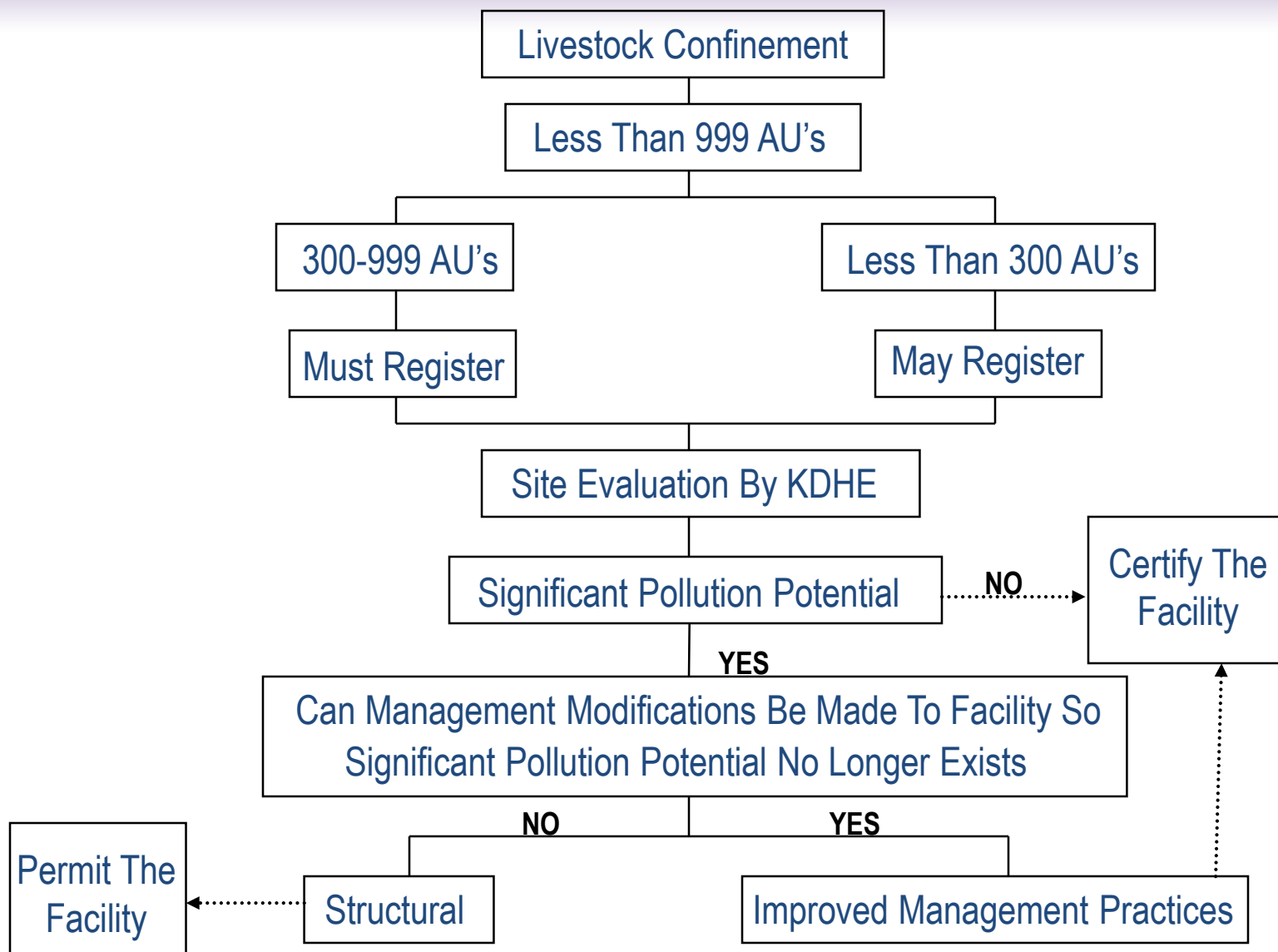


Considerations for New and Expanding Confinement Facilities

Joe Harner &
Watershed Specialists

Water Quality Professional Development
October 4-5, 2016

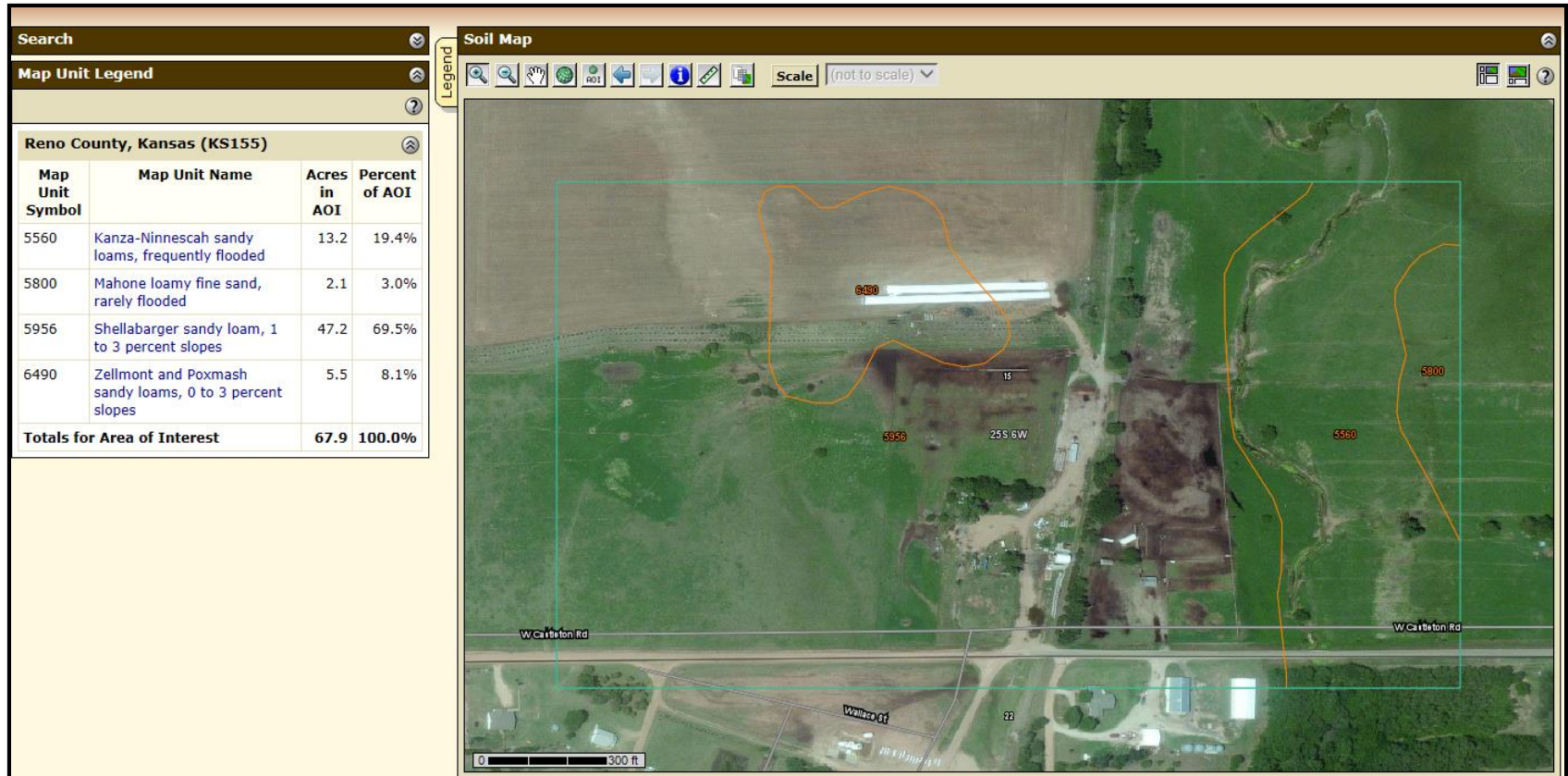
Facility Compliance Process



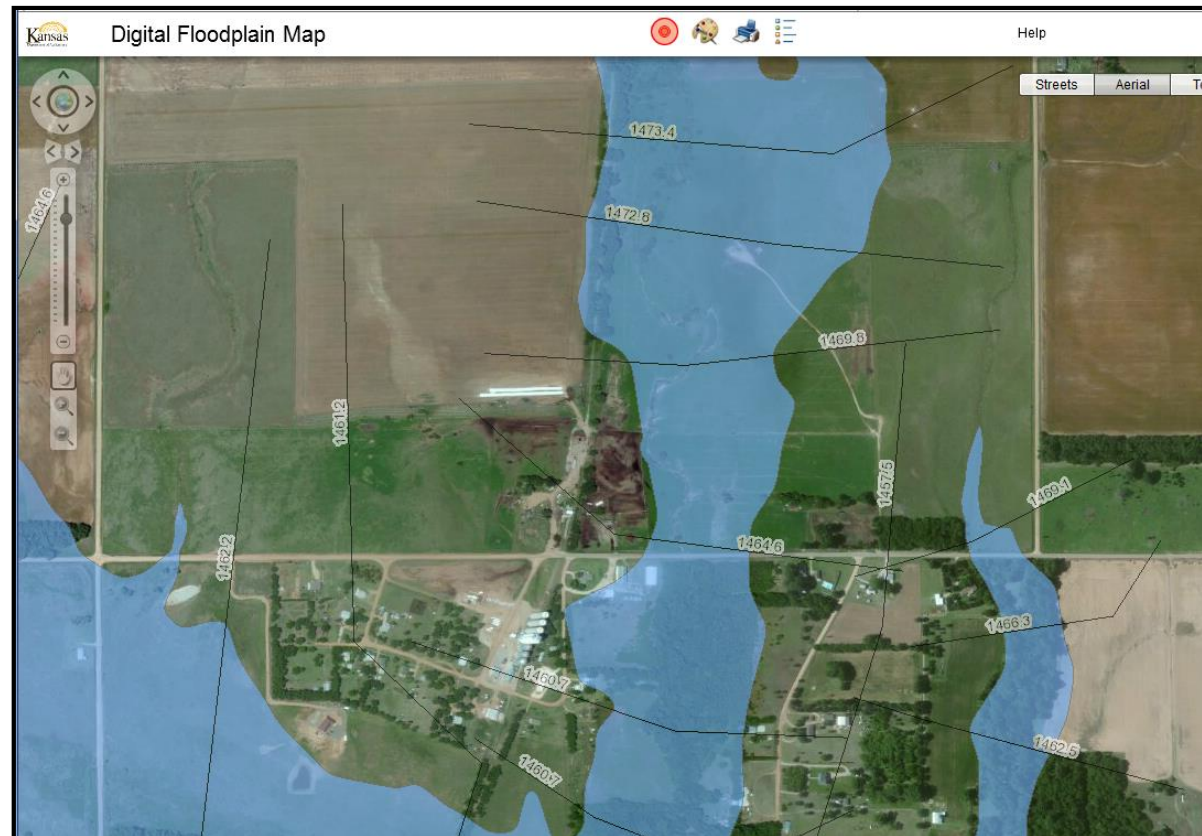
- Over 1,000 AU, or 300 AU and discharges through a manmade device
- Has a lagoon, pit, or tank for waste storage
- Has a classified stream or a channel with frequently or occasionally flooded soils through or adjacent to pens
- Uses improper waste collection, handling, or disposal
- Has daily discharge

- Cattle > 700# --- 1.0 Animal Units
 < 700# --- 0.5 AU
- Mature Dairy Cows --- 1.4 AU
- Hogs > 55# --- 0.4 AU
 < 55# --- 0.1 AU
- Sheep/Goats --- 0.1 AU
- Horses --- 2.0 AU

- Occasionally Flooded
- Frequently Flooded
- Web Soil Survey -
(<http://websoilsurvey.nrcs.usda.gov/app/WebSoilSurvey.aspx>)



- <http://gis.kda.ks.gov/ksfloodplain/>



- <http://www.kdheks.gov/feedlots/download/SensitiveGWAreas.pdf>

